



12 November 2008

Companies Announcements Office
Australian Securities Exchange Limited
10th Floor, 20 Bond Street
SYDNEY NSW 2000

Dear Sir/Madam

Confirmation of hydrocarbon gas in offshore Sydney Basin- MEC Resources Limited (ASX: MMR)

- A hydrocarbon gas source has been analysed and confirmed in the offshore Sydney Basin. The confirmation of a hydrocarbon based gas analysis was released at the Petroleum Exploration Society of Australia (PESA) "Eastern Australasian Basins Symposium" 14-17 September 2008.
- The confirmation of this type of hydrocarbon gas seepage is an extremely significant development for MEC Resources investee Advent Energy, which holds an interest in the offshore Sydney Basin Petroleum Exploration Permit PEP 11. Active seeps of the nature reported are considered by experts in this field to occur in basins now actively generating hydrocarbons and or that contain excellent migration pathways. The methane gas has been reported by independent testing to comprise a mixture of thermogenic and biogenic gas.
- Hydrocarbon gas analysis has been confirmed to be;
 - Methane(CH₄) 90.69%
 - Oxygen(O₂) 1.58%
 - Carbon Dioxide (CO₂) 4.12%
 - Nitrogen(N₂) 3.7%
- The gas seepage has been observed from repeated sea floor positions in an area off the coast of New South Wales and along the mainland margin of the PEP11 Permit. The gas is believed by Advent Energy to be sourced from areas within the PEP11 permit area.
- The area where the gas has been identified is in the same area where oil and gas seeps have been recorded from Long Reef to Catherine Hill Bay, giving rise to periodic oil slicks occurrences along the coast , especially in the Cape Three points, Terrigal area. Visible gas seeps have been audio-visually recorded, and are available to view at www.adventenergy.com.au.

MEC Resources Ltd

ACN 113 900 020
PO Box 317, North Perth, WA 6906
14 View Street, North Perth 6006, Western Australia
T: +61 8 9328 8477 F: +61 8 9328 8733
info@mecresources.com.au www.mecresources.com.au

MEC is pleased to advise that investee company Advent Energy Ltd (“Advent”) is confident that the offshore Sydney Basin is an active hydrocarbon system following the recent industry research and reporting on the area. Advent holds an interest in the offshore Sydney Basin Petroleum Exploration Permit PEP 11.

Advent is in discussions with a number of international oil sector groups on potential joint ventures.

Advent is also continuing to pursue the securing of an appropriate drilling rig.

Yours Sincerely

A handwritten signature in black ink, appearing to read 'D. Breeze', with a stylized flourish at the end.

David Breeze
Executive Director
MEC Resources Ltd
PO Box 317
North Perth WA 6906
Tel: +61 8 9328 8477

Media Enquiries:

Bill Kemmery
Fortbridge Consulting
Tel: +61 2 9331 0655
Mobile: +61 400 122 449

Notes:

In accordance with ASX listing requirements, the geological information supplied in this report has been based on information provided by geologists who have had in excess of five years experience in their field of activity.

Asset Energy Pty Ltd is under contract a wholly owned subsidiary of Advent Energy Ltd and is the operator's agent under the joint operating agreement.

MEC is an exploration investment company and relies on the resource and ore reserve statements compiled by the companies in which it invests. All Mineral Resource and Reserve Statements have been previously published by the companies concerned. Summary data has been used. Please refer to relevant ASX releases for details and attribution. Unless otherwise stated all resource and reserve reporting complies with the relevant standards. Resources quoted in this report equal 100% of the resource and do not represent MEC's investees' equity share.

MEC Resources Ltd

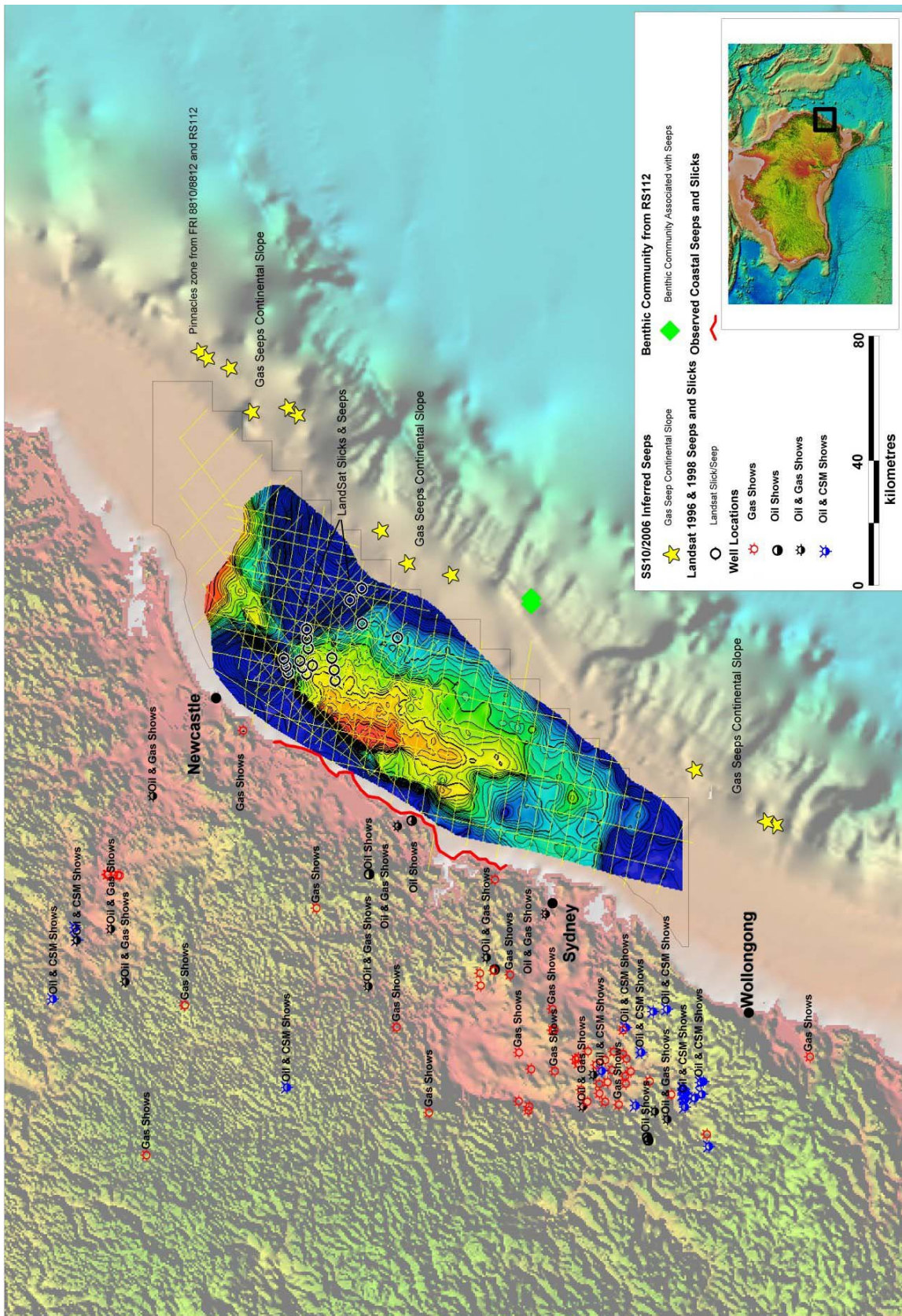
ACN 113 900 020

PO Box 317, North Perth, WA 6906

14 View Street, North Perth 6006, Western Australia

T: +61 8 9328 8477 F: +61 8 9328 8733

info@mecresources.com.au www.mecresources.com.au



MEC Resources Ltd

ACN 113 900 020

PO Box 317, North Perth, WA 6906

14 View Street, North Perth 6006, Western Australia

T: +61 8 9328 8477 F: +61 8 9328 8733

info@mecresources.com.au www.mecresources.com.au